



3 keys to effective business continuity management

Visibility.

Measurement.

Collaboration.

Visibility

Managing business continuity without visibility into downtime and data loss risks is like flying at night without instruments.

Given the complexity and dynamic nature of enterprise IT environments, the only practical way to gain visibility into such risks is through **automated risk discovery** that constantly scans the entire IT landscape for downtime and data-loss threats.

To monitor these risks, you need a business continuity dashboard that not only shows the underlying issues, but also clearly points out the potential business impact. With this information at hand, business continuity and IT teams have an **up-to-date view of the organization's readiness state**. They can pinpoint areas of risk and focus their attention and resources on fixing these issues *before* they impair business operation.

"We are able to identify the possible risks in our current DR/HA strategy, making it easier for us to anticipate them and establish proactive measures prior to contingency tests and simulations."

Antonio Castillo, Manager, DR/HA Europe, BBVA



The screenshot shows a 'Scan Summary' window with a table of risk levels for different business entities. The table has four columns: Business Entity, Data Risk, Availability Risk, Optimization, and SLA. Each cell contains a colored circle indicating the risk level: green for low, yellow for medium, and red for high.

Business Entity	Data Risk	Availability Risk	Optimization	SLA
Billing	Yellow	Red	Green	Green
ERP	Red	Yellow	Yellow	Red
QA	Green	Green	Green	Green
Web	Red	Red	Yellow	Green
LAB	Green	Green	Green	Green
DWH	Yellow	Green	Green	Green
CRM	Yellow	Yellow	Yellow	Green
CMW	Yellow	Yellow	Yellow	Green

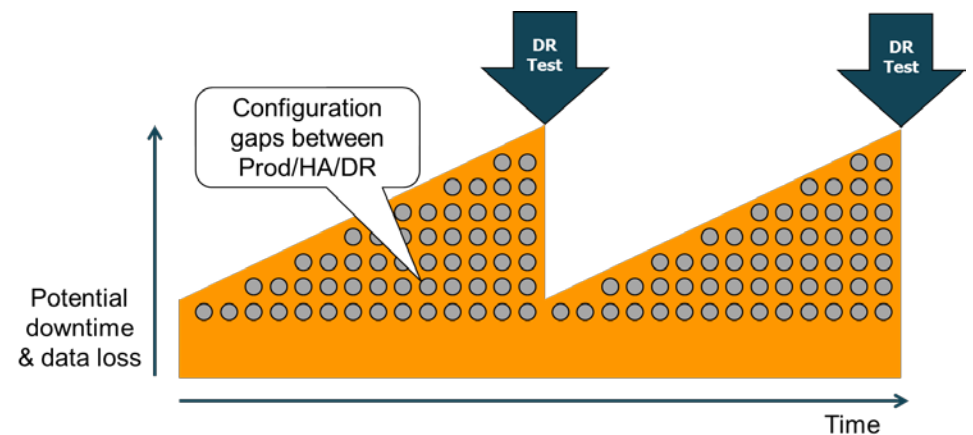
Business Continuity Dashboard showing risk levels for each business service entity

Measurement

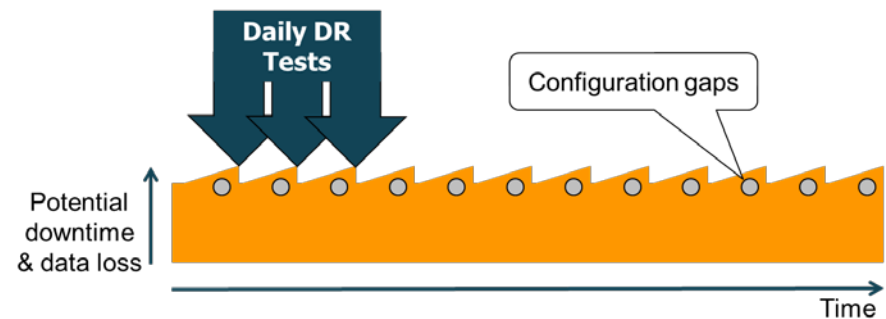
There is no management without measurement. Successful business continuity programs establish measurable goals and service level agreements (SLAs) for critical business systems. The ability to measure compliance with RPO and RTO goals is a key element of every effective program.

Since no environment is error-free, the real question is how quickly you can identify hidden problems and correct them. If you rely on periodic testing to measure compliance with business continuity goals, you can guarantee that issues will creep up in between tests. **Every day that passes from your last test, the risk to your business grows.**

With daily testing and measurement of RPO, RTO, and SLA compliance, you can address issues as soon as they surface and minimize the threat of downtime and data loss.



Downtime and data loss risks accumulation between periodic tests



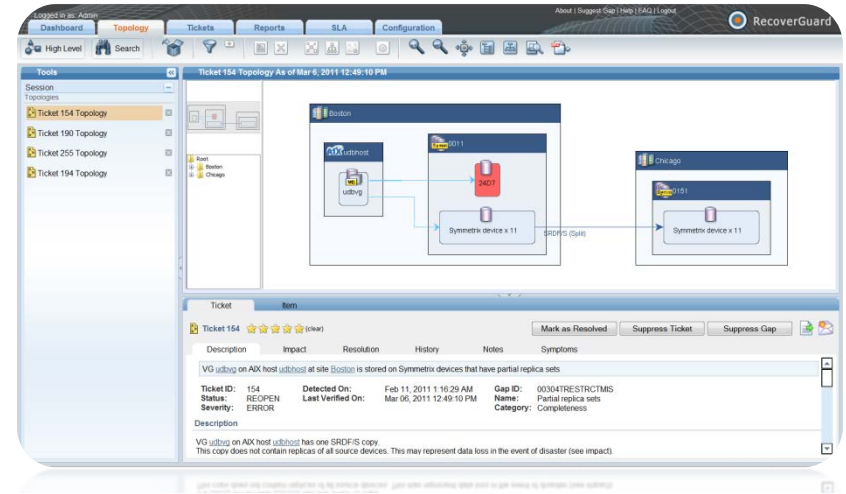
Downtime and data loss risks with daily testing

Collaboration

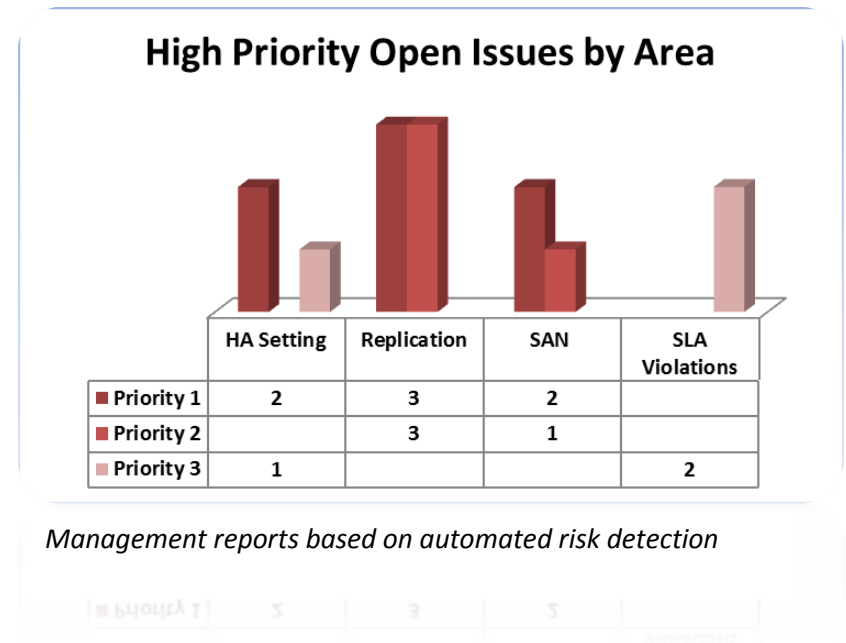
Consistent compliance with business continuity goals requires tight collaboration and coordination between business continuity teams and various IT teams. **Effective collaboration can only be achieved when all parties involved are able to share information** in real-time.

Cross-departmental access to up-to-date actionable information about risks—including the ability to drill down into the symptoms, root causes, and potential business impact—allows for much more effective collaboration. Integration with existing enterprise systems—email, portals, and incident management systems—further streamlines accessibility and collaboration.

Finally, a set of automated management reports that include the most current statistics and measurements allows business owners and stakeholders to keep track of the organization's state of readiness day in and day out.



Tickets generated for each risk detected enable tracking and collaboration



Management reports based on automated risk detection

About Continuity Software

Continuity Software is a leading provider of Business Continuity and Disaster Recovery Risk Management solutions.

The RecoverGuard software helps many of the world's largest organizations mitigate downtime and data loss risks by monitoring production and remote replication environments to detect hidden vulnerabilities and gaps.

With RecoverGuard, you will be confident your service availability and data protection goals can be met on a consistent basis.

[Click here to learn more and view the 2-minute tour](#)



For more information

Website: www.continuitysoftware.com

Email: info@continuitysoftware.com

Tel: 1-888-782-8170 or +1-646.216.8628